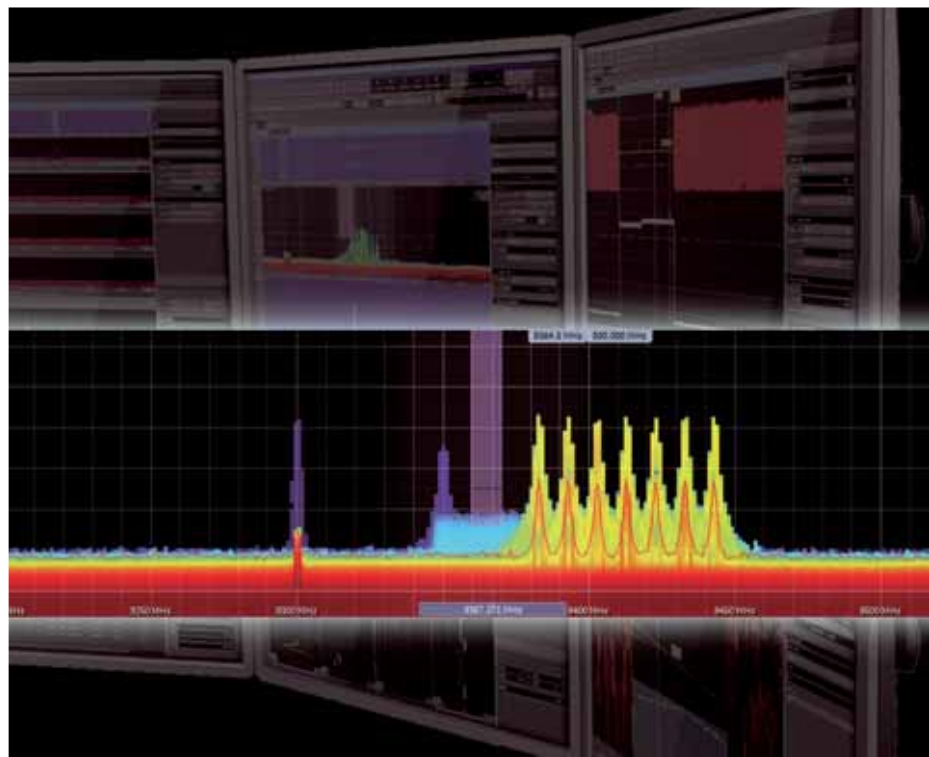


Patria

Server based ARIS



Patria

Server based ARIS



ARIS is a remote operable ELINT system for interception and analysis of the most modern non-communications signals in an increasingly complex signal environment.

ARIS provides all ELINT functionalities

- search spectrum
- real-time spectrum analyzer
- real-time oscilloscope
- pulse analyzer
- modulation analyzer
- direction finding and wideband recorder with playback and offline analysis capabilities through modern and efficient user interface.

The system can be used manually for detailed signal analysis (technical ELINT) or it can

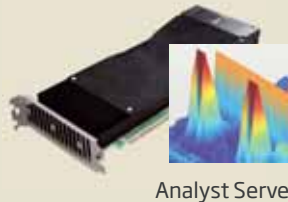
automatically identify active emitters and autonomously run predefined surveillance tasks to record interesting signals for later analysis.

ARIS can be delivered in four different levels of system integration ranging from ELINT analysis application for analysing recorded signals to fully integrated self-contained ELINT capability.

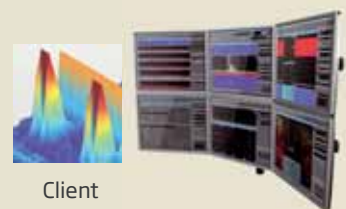
All levels offer ELINT functionalities that can be accessed and operated either locally at a sensor site/platform or remotely from an operations center.

ARIS is a proven system. It has been in operational use since 2010 and it is continuously developed further.

1 - ELINT analysis application



Analyst Server



Client

2 - Server based ELINT system



Collector Server



Server



Recorder

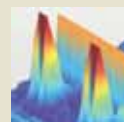


Recorder

3 - ELINT system



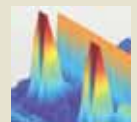
Antenna



Receiver Server



Receiver



C2 Server

4 - Self-contained ELINT capability



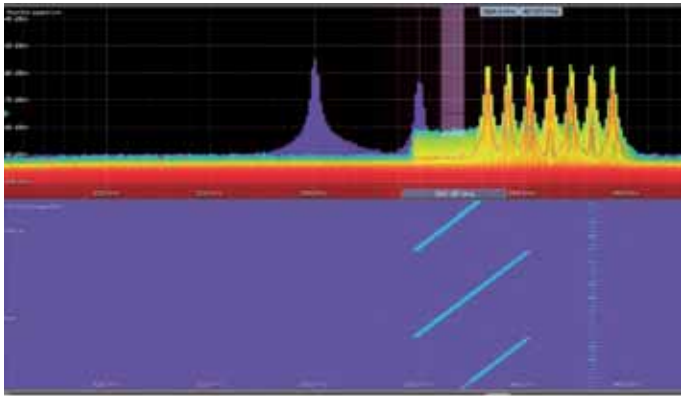
Transportable station



Mobile station



Aircraft, ship or fixed station installation

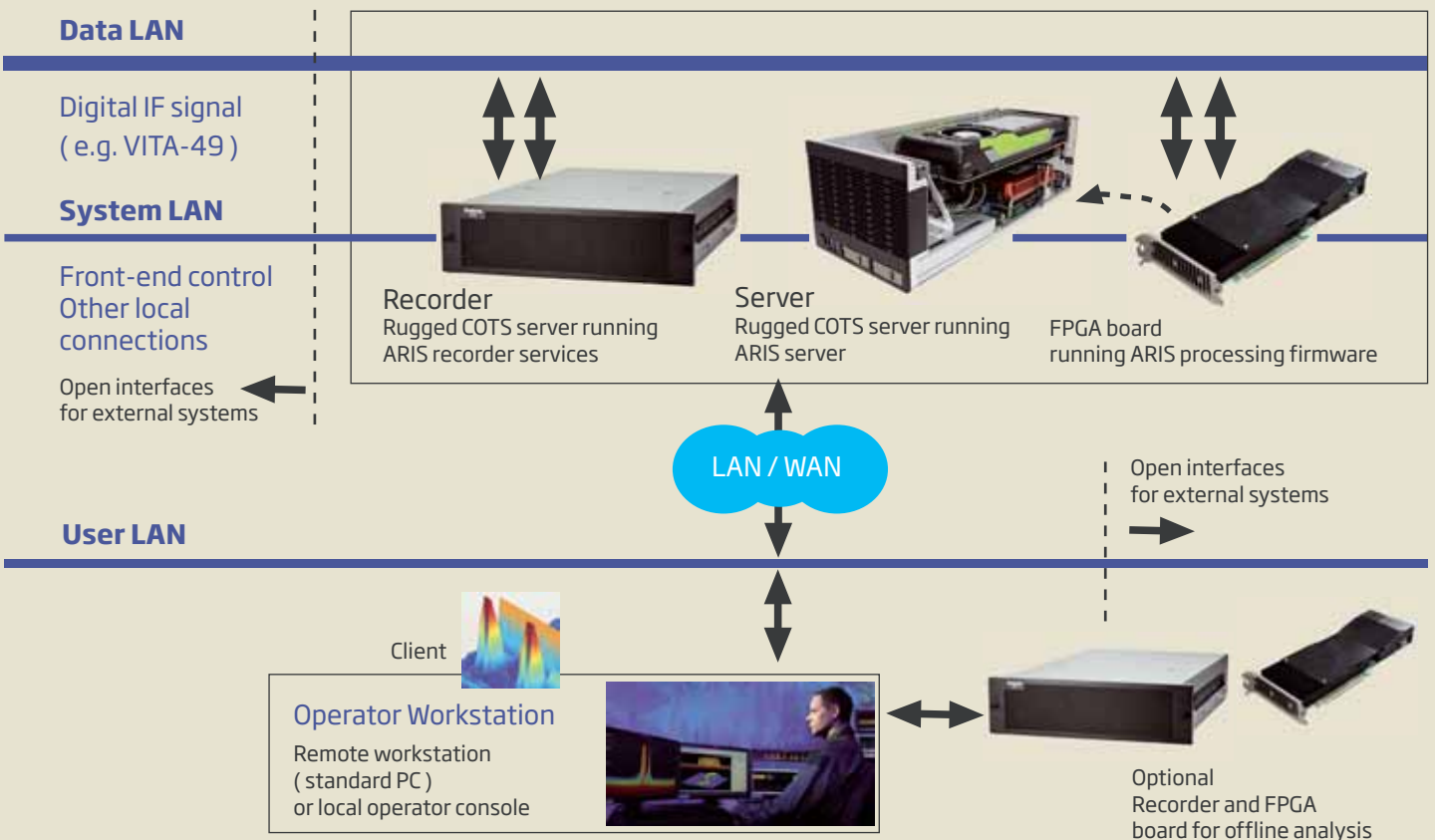


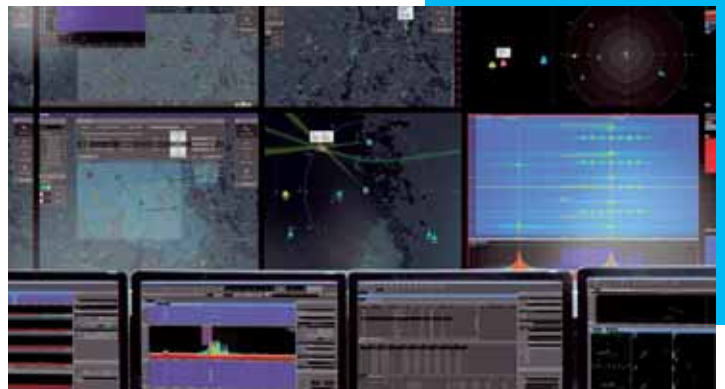
Server based ELINT System

Server based ARIS is an excellent choice to be integrated into new or existing ELINT/ESM architectures that have capable receivers but demand modern ELINT capability. It is easily deployable in space constrained platforms such as ships or aircraft.

Features

- Scalable and modular system with small form factor and low power consumption
- Open architecture and standard interfaces enabling easy integration (e.g. 40 GbE, VITA-49)
- Offers all ELINT tools for real-time or offline detailed signal analysis either locally or remotely via secure network connection
- Tools for automatic or manual signal collection
- Up to 500 MHz instantaneous bandwidth per channel





Patria